

# GSM/GPS Mini Tracker

MT-3000



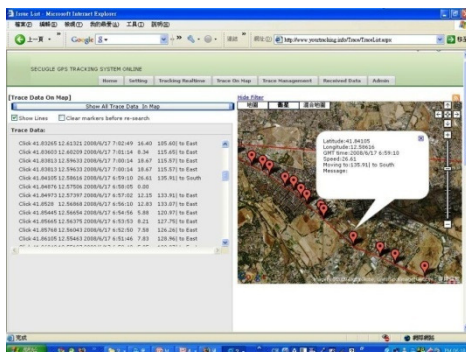
High Performance Personal Locator



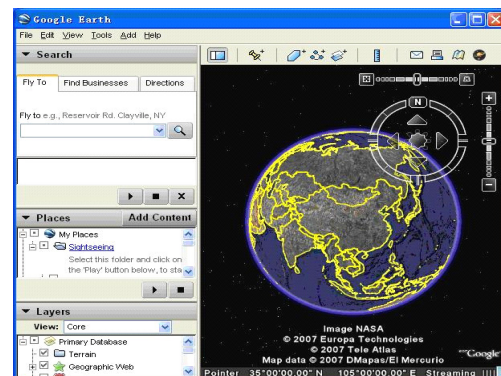
## Features & Functions

1. Build-in GPS personal locator.
2. GSM /SMS communication or GPRS TCP/UDP connection .
3. Works worldwide Support 3-frequency GSM 900/1800/1900 MHZ.
4. High sensitivity ,New technology and latest GPS SiRF-Star III chipset
5. Compact size, and smaller than one name card. Easy to hide
6. Very Low power consumption
7. Fast Signal Acquisition
8. Support single location and continuous tracking
9. Support location by time interval.
10. Support location triggered by authorized cell phone
11. Support alarm and remote monitor.
12. Support low battery alert.
13. Support check location by SMS and Internet
14. Monitors can track the person without interfering him, LIVE Real-Time tracking.
15. Locate the locator holder by the mobile phone via SMS (short messaging system).
16. SOS button send out exact location for immediate rescue/action.
17. Geo-fencing to restrict movement to a defined radius.
18. No monthly service charges to be paid to the call center.

Find the location of your tracker  
on web server Via GPRS



Find the location of your tracker  
Google earth Via SMS



# GSM/GPS Mini Tracker

MT-3000



## Specifications:

Item	Specification
Charging Voltage	DC 4.2-5.5V/400mA (Mini USB port)
Dimension	63 mm × 42 mm × 22 mm
GSM module	GSM 900/1800Mhz or GSM 850/1900Mhz (Custom)
Flash Memory	4M
GPS Chipset	latest GPS SIRF-Star III chipset
GPS Sensitivity	-159Db
GPS Frequency	L1, 1575.42 MHz
C/A Code	1.023 MHz chip rate
Channels	20 channel all-in-view tracking
Position Accuracy	10 meters, 2D RMS
Velocity Accuracy	0.1 m/s
Time Accuracy	1 us synchronized to GPS time
Default datum	WGS-84
Reacquisition	0.1 sec., average
Hot start	1 sec., average
Warm start	38 sec., average
Cold start	42 sec., average
Altitude Limit	18,000 meters (60,000 feet) max.
Velocity Limit	515 meters/second (1000 knots) max.
Jerk Limit	20 m/sec
Operating temperature	-20° to 60° C
Humidity	5% to 95% Non-condensing
Voltage	Rechargeable 820mAh battery (3.7V),
Work time	60 hours in sleep mode and 13 hours in normal mode
LED	3 LEDs to show POWER,GPS,GSM status
Button	One SOS button for sending the emergency message.