

GPS Data logger for Bicycle

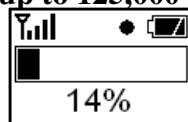
DL-200



DL-200 is a GPS data logger that records track data from the receiving GPS signal. Thanks to its durable and waterproof design, the DL-200 is the best companion for outdoor life. With bundle software, all recorded GPS data can be downloaded to the computer quite simply and view the tracking information on the map. It also allow you to relay the tracking information to popular web pages such as Flickr and Google Maps.

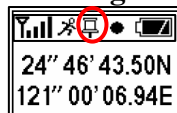
Main Features

1. To Record up to 125,000 way point.

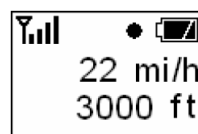


Shows the used memory on the LCD

2. Bundled user-friendly software that makes the log data retrieving and using very easy.
3. Support "Push-to-log" to save present log data as P.O.I mark..



4. Backlit LCD display provides real time information such as speed, mileage, clock, location and altitude.



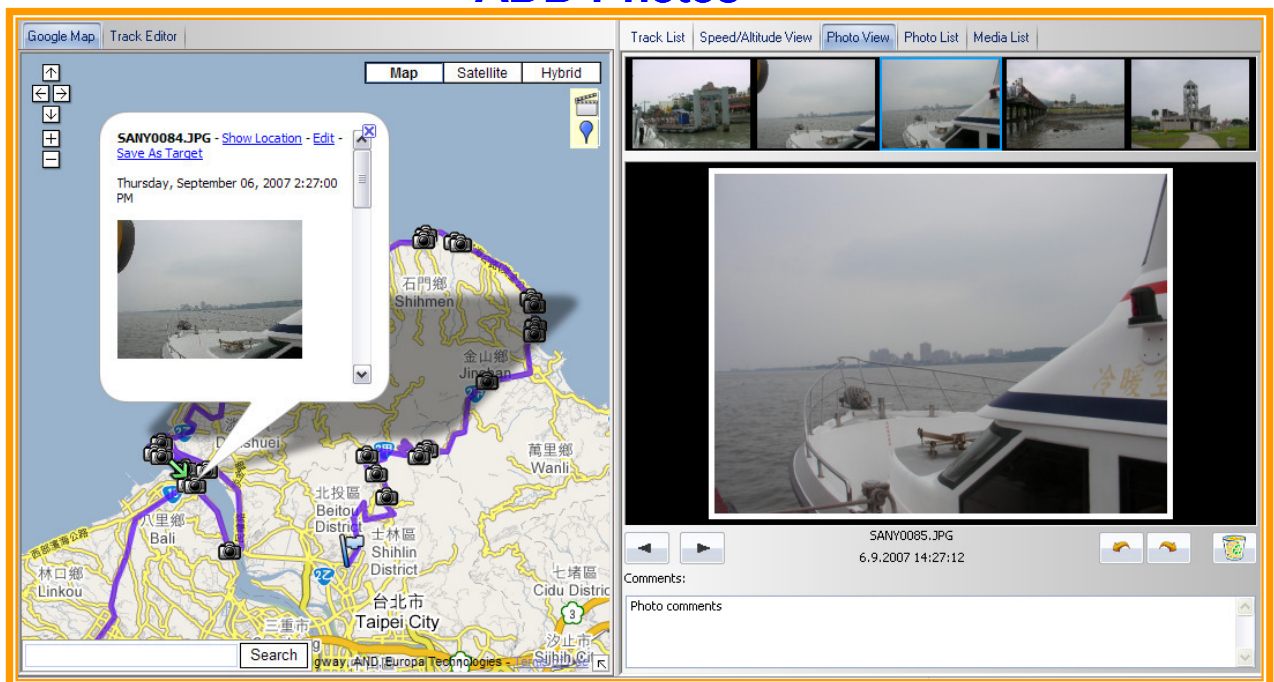
5. Powered by 2 x AAA alkaline batteries, no battery charging required.
6. Supporting more than 12 hours tracking time.
7. Durable and waterproof design that meet outdoor use.
8. Bundles fixture allows you to install DL-200 on your bicycle.
9. Programmable time intervals and Distance of waypoints advanced setting recording that fit various kinds of outdoor activities.



Specification

1. GPS Frequency:L1.1575.42 MHz, 51 Channel Acquisitions / 14 Channel Tracking
2. Chip set: Skytraq V621/ Update rate:1 Hz
3. Antenna: Built in patch antenna
4. Accuracy: 2.5m CEP (non DGPS) Re-acquisition Time: <1 second
5. Cold Start: 35 seconds (average, under open sky)
6. PC Interface: USB 2.0
7. Protocol: NMEA 0183 v3.01 (GPGGA, GPGSA, GPGSV, GPRMC, GPVTG)
8. Dynamics: 515 m/s, 4G
9. Power Consumption: 110 mA/h at full operation
10. Battery: AAA x 2,non-rechargeable(DL-200)
11. Battery: 750mAh Lithium-ion polymer (DL200 Plus)
12. Tracking Time: Up to 12 hours(DL200), 20hours (DL200 Plus)
13. Dimension: 71x 47x25 mm, Weight: 65g (without batteries)
14. Operating Temperature: -20°C to +60°C / Storage Temperature: -55°C to +75°C
15. Operating Altitude: < 18,000m

ADD Photos



Google Earth Viewing

Packaging included:

DL-200x1

User's manual x1

USB cable x1

Bicycle cradlex1

Driver installation CDx1

